



## Rossetti Road, London, SE16 3EA

A naturally bright two bedroom apartment in a quiet Bermondsey residential setting. With double glazed windows throughout, the property boasts a well proportioned living room, a generous separate kitchen with plenty of storage space, a modern bathroom, the spacious master bedroom, and the second bedroom perfect to be used as an home office. South Bermondsey Station for a 5 minute commute to London Bridge is just round the corner as well as a plethora of local amenities. Onsite benefits include allocated car park space. The development is on a cycle quiet-way.

Council Tax Band: C

**£1,800 Per month**

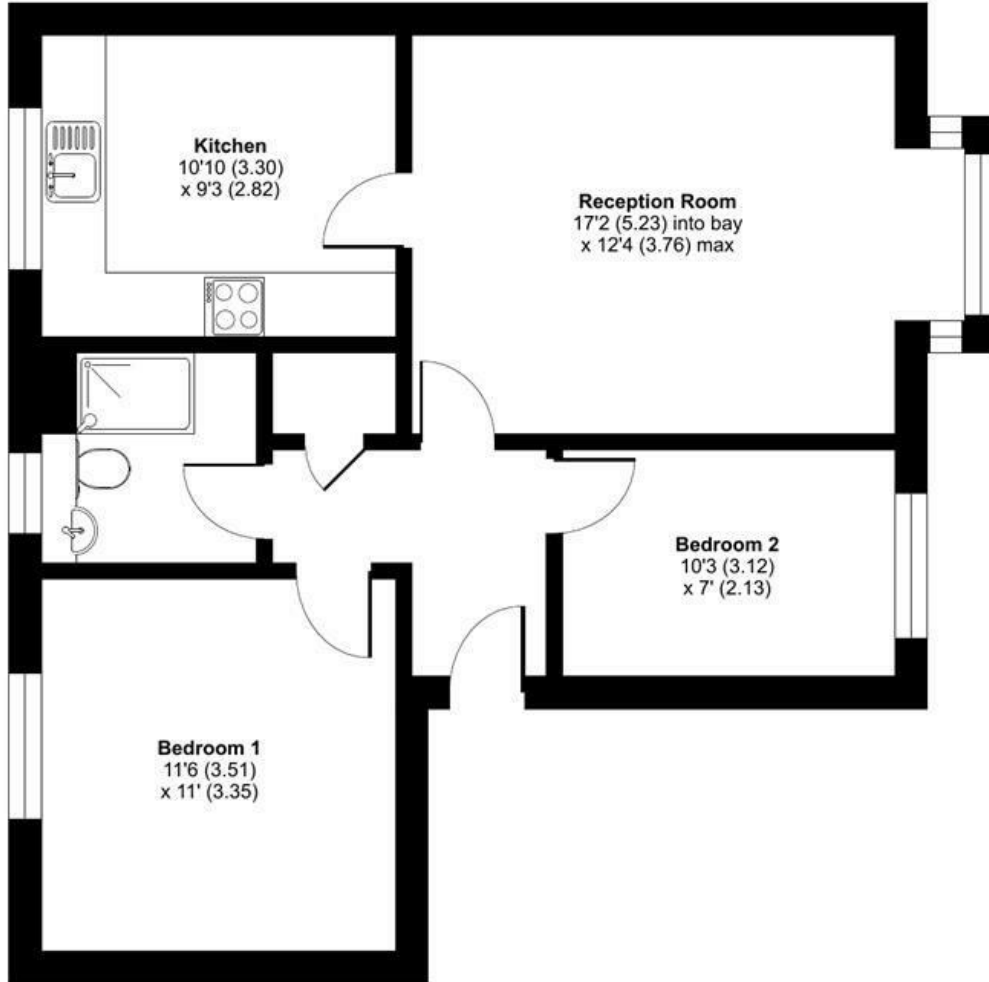
- Two Bedroom Apartment
- Double Glazed Windows
- Moments from South Bermondsey Station
- Next to Cycle Quietway
- Council Tax Band C

**Alex & Matteo**  
ESTATE AGENTS

# Rossetti Road, London, SE16

Approximate Area = 630 sq ft / 58.5 sq m

For identification only - Not to scale



THIRD FLOOR

**Alex & Matteo**  
ESTATE AGENTS



Floor plan produced in accordance with RICS Property Measurement Standards incorporating International Property Measurement Standards (IPMS2 Residential). © ntechcom 2023. Produced for Alex & Matteo Estate Agents. REF: 963070

Energy Efficiency Rating		Current	Potential
Very energy efficient - lower running costs			
(92 plus) <b>A</b>			
(81-91) <b>B</b>			79
(69-80) <b>C</b>		63	
(55-68) <b>D</b>			
(39-54) <b>E</b>			
(21-38) <b>F</b>			
(1-20) <b>G</b>			
Not energy efficient - higher running costs			
<b>England &amp; Wales</b>		EU Directive 2002/91/EC	